

**CROSS STITCH PATTERN**

# **HOLLY LEAVES AND BERRIES**

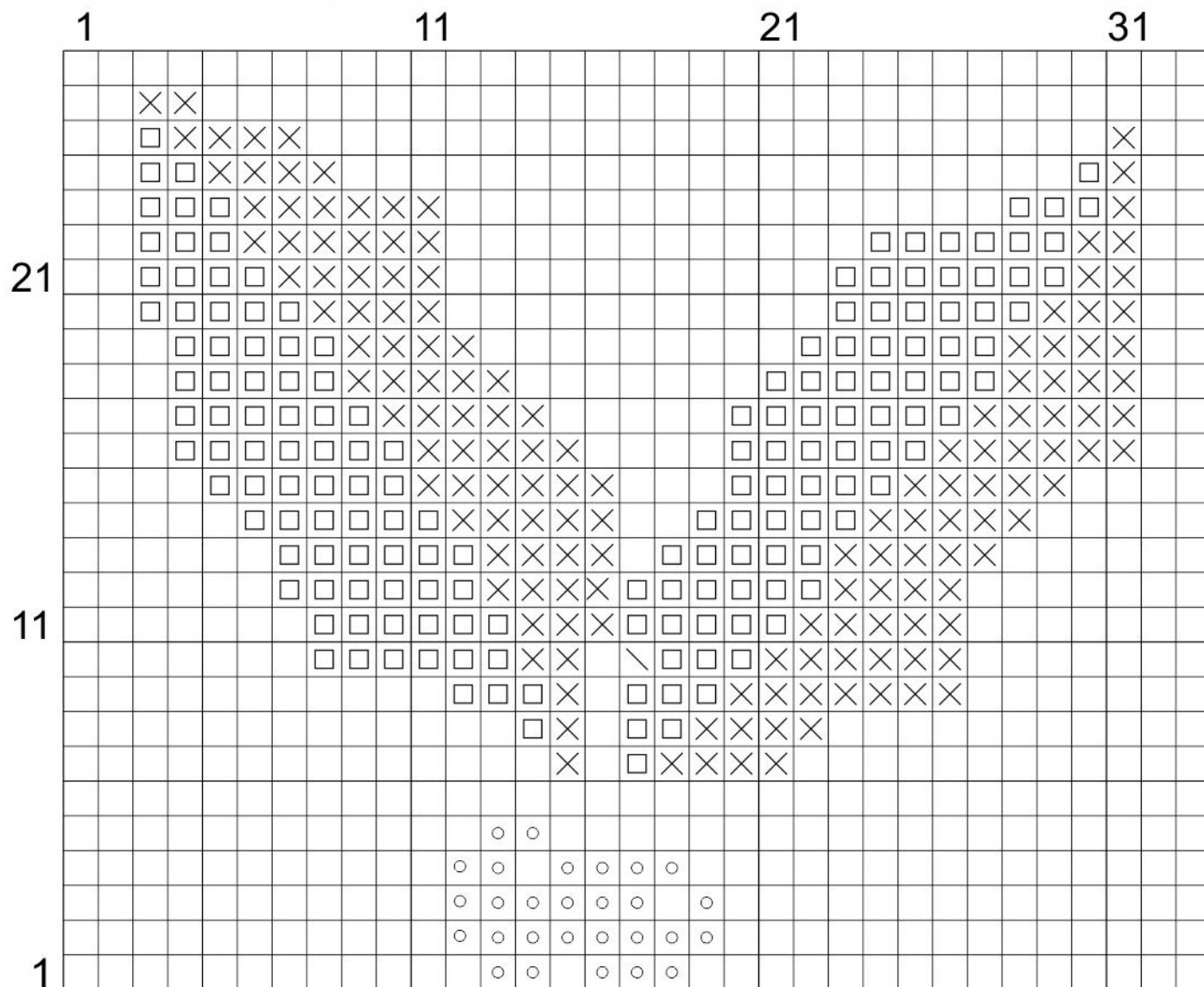


**This cross stitch is the perfect project to take on this festive season - and it's really great for beginners! This pattern is also ready to download at [www.sewyoumagazine.com](http://www.sewyoumagazine.com)**




**Threads: It's so easy, it only has 3 colours / 3 Skein (see DMC thread list at end of pattern)**

# CROSS STITCH PATTERN

## CROSS STITCH PATTERN "HOLLY SPRIG" LEGEND (PATTERN)



### Cross stitch pattern "Holly Sprig" - DMC color list

Color	Number	Color code
	1	817 Coral Red Very Dark
	1	500 Blue Green Very Dark
	1	700 Green Bright